



ALMERA





## ALL-NEW NISSAN ALMERA CHALLENGE ALL BELIEFS

It's everything you're looking for, and more. All-New Nissan Almera features Nissan Intelligent Mobility technology that can help keep you safe and connects you to your world like never before. Want personalization? You got it. Interior tech lets you customize everything, from the available semi digital display meters to the Apple CarPlay™. And when it comes to performance, merge and manoeuvre easily with turbo torque while achieving an exceptional fuel economy of 18.4km/L\*. This is tech that keeps you a step ahead. This is Nissan Intelligent Mobility.



## NISSAN INTELLIGENT MOBILITY

Nissan 360° Safety Shield and advanced driver assistance systems that look out for you



### INTELLIGENT FORWARD COLLISION WARNING (IFCW)

Standard Intelligent Forward Collision Warning monitors vehicle distance and speed between 5km/h to 80km/h, and provides audio and visual alerts when it detects a risk from frontal collision.



### INTELLIGENT FORWARD EMERGENCY BRAKING (IFEB)

If the driver doesn't take any action after the IFCW system detected a risk from frontal collision, the standard Intelligent Forward Emergency Braking system will indicate an emergency stop sign and automatically engage the brakes to help avoid a frontal collision or lessen the severity of an impact.



### BLIND SPOT WARNING (BSW)\*

At a driving speed from 32km/h and above, the Blind Spot Warning system helps keep an eye on blind spot areas at approximately 3 meters x 3 meters via radar sensors at the rear bumper, and alerts the driver of other vehicles in adjacent lanes when changing lanes.



### REAR CROSS TRAFFIC ALERT (RCTA)\*

While the vehicle is reversing at a speed less than 8km/h, the Rear Cross Traffic Alert system helps to detect an approaching vehicle below 30km/h driving speed, and warns the driver with audio and visual alerts.

## GIVING YOU A BIRD'S-EYE VIEW



### Background savvy

In reverse, the display helps you see what's directly behind you, while the overhead view helps with smaller objects that might be hidden below your window

### Spare your wheels

The side view is a great help for seeing how close you are to the curb



### Fear no parking lot

Tight spot with cars on either side? The overhead view helps you center your car in the space

### Right on the nose

With a front and overhead view, you know just how far to pull up - without going too far



### INTELLIGENT AROUND VIEW MONITOR (IAVM)\* WITH INTELLIGENT MOVING OBJECT DETECTION (IMOD)\*

Perfect during parking and manoeuvring tight spots, the Intelligent Around View Monitor system uses 4 cameras that provide an on-screen virtual 360° bird's-eye view of the vehicle (as well as 3 other angle views), while the Intelligent Moving Object Detection system helps to detect and alert the driver of moving objects surrounding the vehicle.

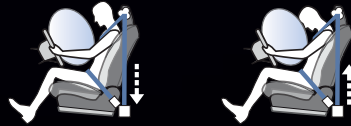
\*For VLT variant only. Actual car specifications may vary from model shown.

# IT'S NICE TO HAVE MORE BACKUP WHEN SOMETHING UNEXPECTED HAPPENS



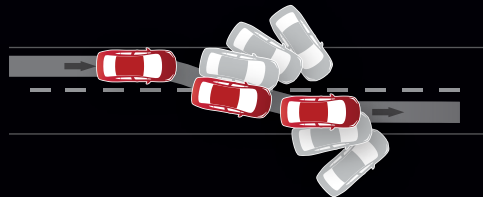
## PRETENSIONER AND LOAD LIMITER SEATBELTS

The Pretensioner and Load Limiter seatbelts can extend and retract with occupant movement, yet tightens or locks the belt to keep driver and passengers as close to the backrest as possible in case of a collision. Once the airbags are inflated, the seatbelts will automatically ease up to reduce chest injury.



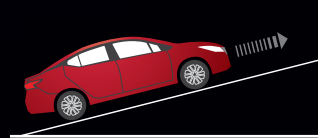
## VEHICLE DYNAMIC CONTROL (VDC) WITH TRACTION CONTROL SYSTEM (TCS)

Road gripping technology. In slick conditions, the Vehicle Dynamic Control monitors steering and braking, and responds by reducing engine output and/or applying brake pressure to specific wheels. The Traction Control System means you won't be wasting power just spinning the tyres. When it senses drive-wheel spin, it responds by reducing throttle or applying brake pressure to specific wheels.



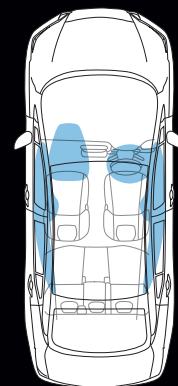
## HILL START ASSIST (HSA)

When you are on a steep incline, Hill Start Assist helps stop you from rolling backwards. It holds brake pressure for a few seconds, giving you enough time to switch from the brake pedal to the accelerator.



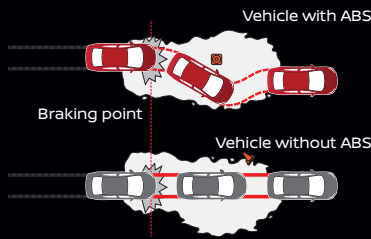
## 6 SRS AIRBAGS\*\*

That's right, 6 SRS Airbags; dual front, side and curtain, that will inflate automatically in an event of a collision to reduce the amount of injury impact from various angles.



## ANTI-LOCK BRAKING SYSTEM (ABS)

Anti-Lock Braking System can help you maintain control by preventing wheel lockup, which in turn allows you to steer around obstacles in your path.



## ELECTRIC BRAKE FORCE DISTRIBUTION (EBD)

While the Electric Brake Force Distribution system detects extra weight in the back and adjusts the rear brakes accordingly.

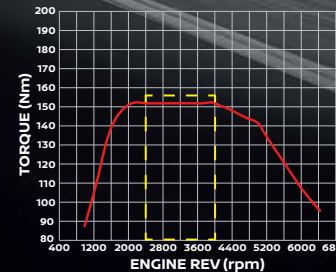
## BRAKE ASSIST (BA)

Brake Assist helps apply maximum braking force if it detects hard braking during an emergency situation.

# AMAZING TURBO TORQUE, REMARKABLE FUEL EFFICIENCY



**TURBO**  
152Nm TORQUE  
**18.4km/L\***  
(5.4L/100km)  
FUEL EFFICIENCY  
(Up to 650km in 1 full tank)



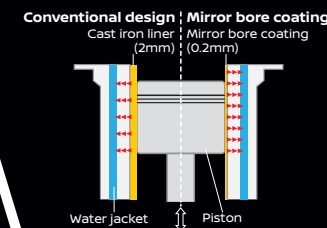
Max. Torque of 152Nm (Flat Torque Curve) at a low 2,400 - 4,000rpm

## ALL-NEW 1.0 LITRE TURBO ENGINE

The all-new HR10DET TURBO engine unleashes a maximum power output of 100PS and high torque of 152Nm at a low 2,400 to 4,000 rpm. Most importantly with the constant torque available at an rpm range most operated in daily drives; overtaking has never been easier and less stressful.

## NEXT GENERATION X-TRONIC CVT WITH D-STEP LOGIC

This enhanced transmission provides an improved constant acceleration, with the shift feel like a conventional auto transmission and adds the flexibility and smoothness of a CVT, yet at the same time achieving remarkable fuel efficiency. It is also equipped with Sport Mode driving which holds the gear longer for better acceleration performance and a sporty drive.



## MIRROR BORE COATING TECHNOLOGY

Adapted from the legendary Nissan GT-R, this technology produces an extremely thin 0.2mm mirror bore coating cylinder liner that provides better heat conduction, enhanced cooling performance and less engine knocking. With the advantages gained, it contributes toward increasing both fuel efficiency and engine power.

\*Fuel Efficiency is based on NEDC R101 Test Mode.

\*\*For VLP and VLT variants only. Actual car specifications may vary from model shown.

## BREAKTHROUGH DESIGN IN EVERY DETAIL

The All-New Nissan Almera was reimagined under Nissan's "Emotional Geometry" design language. Every corner, crease and curve of the All-New Nissan Almera worked together to create something spectacular. From the signature V-motion front grille and boomerang-shaped LED headlamps that flows across the front end to a sleek, low profile floating roof and signature rear LED tail-lamps that created an aerodynamic and cutting-edge presence, the All-New Nissan Almera is described as an energetic, provocative and confident sedan.

**Cd**  
**0.28**  
(Coefficient drag)



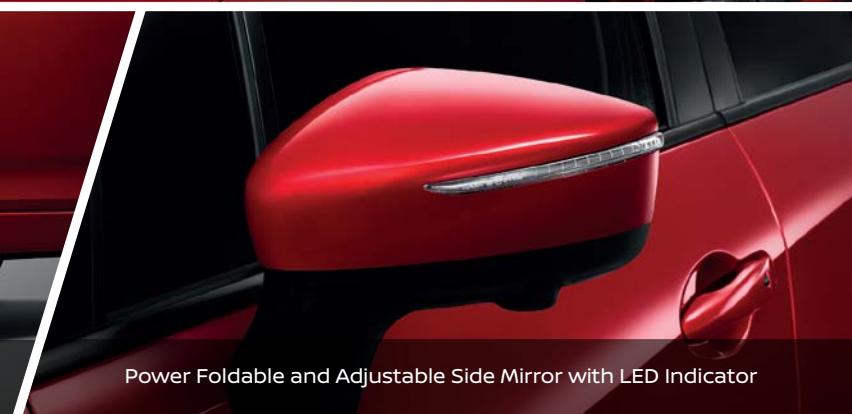
Advance Boomerang-shaped LED Headlamps project a brilliant, wide beam for a clearer view of the road\*



Low Profile Floating Roof Design



Machined Two Tone 16" Alloy Wheels put a new spin on style \*\*



Power Foldable and Adjustable Side Mirror with LED Indicator



Signature Rear LED Tail-Lamps with Gloss Black Surround



Rear Bumper with Carbon Fibre Pattern Finish and Body-Coloured Sport Diffuser

\*For VLT variant only. \*\*For VLP and VLT variants only. Actual car specifications may vary from model shown.



**USER-CENTRIC TOUCHSCREEN AND CUSTOMIZABLE CONTROLS\*\***

- 8" Advance Touchscreen Display Audio with Apple CarPlay™ and Android Auto™
- Intuitive Climate Control System



**SPORTY FLAT BOTTOM LEATHER STEERING WHEEL**

- With Audio, Bluetooth Handsfree and Semi Digital Display switches\*\*
- Cruise Control\*
- Tilt and Telescopic Adjustment (standard on all variants)



**STUNNING DUAL TONE DASHBOARD WITH DOUBLE STITCHING, SOFT PADDED GREY INSTRUMENT PANELS\*\***



**FULL COLOUR 7" SEMI DIGITAL DISPLAY PROVIDES BRILLIANT CUSTOMIZABLE DRIVE INFORMATION\*\***

- |  |  |
|--|--|
| 1. Main screen with Digital Tachometer (RPM) & Distance-To-Empty (DTE) Information | 5. Digital Speedometer and Audio Status                        |
| 2. Digital Audio Status (Radio, Bluetooth, USB)                                    | 6. Digital Drive Computer                                      |
| 3. Digital Average Fuel Economy  | 7. Digital Visual Driving Aids for Nissan Intelligent Mobility |
| 4. Digital Fuel Economy History  | 8. Digital Coolant Temperature Status                          |
|  | 9. Comprehensive Digital User Settings                         |



**INTELLIGENT KEY (I-KEY) WITH PUSH START IGNITION**

No more fumbling for keys. With your standard I-Key in your pocket or bag, just get in, buckle up, hit the Push Start Ignition, and you're ready to go.

**IT'S OK TO SAY "WOW" EVERY TIME YOU GET IN**

From the moment you get in, you'll feel like you've been upgraded. The All-New Nissan Almera features impressive fit and finish, perfect blend of technologies, smart design and craftsmanship with its chrome, silver painted, piano black and carbon fibre pattern finishes around the inner door handle and armrest decorations, aircon rings, center console, shift knob and gate, meter cluster housing and steering wheel - all adds up to your everyday wow moment.

\*For VLT variant only. \*\*For VLP and VLT variants only. Actual car specifications may vary from model shown.



**ZERO-GRAVITY INSPIRED SEMI BUCKET SPORT SEATS (STANDARD ON ALL VARIANTS)**

Not only helps to reduce fatigue, it also feels premium with the stylish grey accent.



**GENEROUS TRUNK SPACE, UP TO 482 LITRES**

When you need more room for cargo, the large trunk provides plenty of room for the job at hand. Even better? It now features a lower, wider opening for easier access.

**BRILLIANTLY SPACIOUS AND QUIETER CABIN**

The All-New Nissan Almera retains its highly appreciated interior space with its roomy rear legroom of 620mm, new split fold-down rear seats function and large trunk space. Along with improved soft mountings, thicker door glass and insulation around the vehicle, the All-New Nissan Almera's noise, vibration and harshness (NVH) has been considerably reduced, resulting in a quieter, stress-free cabin altogether.

Actual car specifications may vary from model shown.



**60:40 SPLIT FOLD-DOWN REAR SEATS (STANDARD ON ALL VARIANTS)**

Folding down one side makes room for more gear and a passenger still aboard. Or fold both seats down and really pack it in.



FRONT CONSOLE

CENTER CONSOLE

REAR CONSOLE

**3 USB-POWERED PORTS**

Keep your passengers electronic devices charged wherever they need it.

## VEHICLE SPECIFICATIONS

VARIANTS	VL	VLP	VLT
Engine	HR10DET		
Type	In-Line 3-Cylinder, DOHC, 12-Valves with Turbocharger		
Bore Width x Stroke (mm)	72.2 x 81.3		
Displacement (cc)	999		
Max. Horsepower (kW (PS) / rpm)	74 (100) / 5,000		
Max. Torque (Nm (kg-m) / rpm)	152 (15.5) / 2,400 - 4,000		
Compression Ratio	9.5 +/- 0.2		
Fuel Tank Capacity (Litre)	35		
Fuel Economy	18.4km/L (5.4L/100km) <Range up to 650km>		
DIMENSION, WEIGHT			
Overall Length x Width x Height (mm)	4,495 x 1,740 x 1,460		
Wheelbase (mm)	2,620		
Minimum Turning Radius (m)	5.3		
Curb Weight (kg)	1,090	1,112	1,114
TRANSMISSION / SUSPENSION SYSTEM			
Type	X-TRONIC CVT with D-Step Logic and Sport Mode		
Suspension	Front	Independent MacPherson Struts With Stabilizer	
	Rear	Torsion Beam With Stabilizer	
BRAKE SYSTEM			
Front	Ventilated Disc		
Rear	Drum		
WHEELS / TYRES			
Wheels	Alloy (Silver)	Alloy (Machined Two Tone)	
Tyres	195/65 R15	205/55 R16	
Spare	Temporary Tyre 125/70 D15		
NISSAN INTELLIGENT MOBILITY (NIM)			
Intelligent Forward Collision Warning (IFCW) with Intelligent Forward Emergency Braking (IFEB)	with		
Intelligent Around View Monitor (IAVM) with Moving Object Detection (IMOD)	-	Rear View Camera	with
Blind Spot Warning System (BSW)	-		with
Rear Cross Traffic Alert (RCTA)	-		with
SAFETY			
SRS Airbags	2	6	
Hill Start Assist (HSA)	with		
Anti-Lock Braking System (ABS)	with		
Electronic Brakeforce Distribution (EBD) & Brake Assist (BA)	with		
Vehicle Dynamic Control (VDC) with Traction Control (TC)	with		
ISOFIX with Top Tether (x2)	with		
Seatbelt Reminder (x5)	with		

EXTERIOR	VL	VLP	VLT
Headlamps	Halogen with Auto On / Off		LED with Auto On / Off
Daytime Running Lights	Halogen		LED
Fog Lamps	Front	Halogen	LED
	Rear	LED	
Side Mirrors	Power Foldable & Adjustable Mirror		
Wing Mirror Signal Light	LED		
Rear Combination Lamps	LED		
Grille	Chrome		
Door Handles	Body Colour		
Antenna	Glass Printed		
Rear Diffuser	Body Colour		
Trunk Lid Spoiler (Gloss Black)	-		with
INTERIOR			
Steering Wheel with Active Return Control	Urethane	Leather	
Cruise Control	-		with
Advance Drive Assist Display (ADAD)	Standard Display	Full Colour 7" Semi Digital Display	
Steering Wheel Switches	Audio & Bluetooth Handsfree	Audio, Bluetooth Handsfree & ADAD	
Tilt & Telescopic	with		
Shift Knob	Carbon Fibre Pattern	Carbon Fibre Pattern & Chrome Lining	
One Touch Turn Signal & Variable Intermittent Wipers	with		
Intelligent Key (i-Key) with Push Start Ignition and Engine Immobilizer	with		
Dual Tone Dashboard	-	With & Soft Padded Grey Instrument Panel	
Seat Upholstery	Semi Bucket Fabric Seats with Grey Accent	Semi Bucket Leather Seats with Grey Accent	
Zero-Gravity Inspired Seats	Driver & Front Passenger		
Front Center Console with Armrest	with		
Rear Armrest with Cup Holders	with		
Air-conditioning System	Manual	Automatic Climate Control	
Audio System	AM/FM, USB, iPod, AUX, Bluetooth	8" Advance Touchscreen Display Audio with Apple CarPlay™ and Android Auto™	
USB-Powered Ports	3		
Speakers	4	6	
Cup Holders	8		
60:40 Fold-Down Rear Seats	with		
Trunk Remote Release	with		
Trunk Size (VDA)	482L		

## AVAILABLE COLOURS



Radiant Red **M 118**  
NEW



Monarch Orange **M 119**  
NEW



Dark Metal Grey **M 120**  
NEW



Brilliant White **S 205**



Diamond Black **M 091**





Nissan Intelligent Mobility moves you one step ahead. In cars that feel like an extension of you, helping you see more and sense more, reacting with you, and sometimes even for you. Nissan Intelligent Mobility is about a better future – moving us to a world that's safer, more sustainable and exciting.



**EDARAN TAN CHONG MOTOR SDN. BHD.**

Reg. No. 199101020358 (230669-H)

A subsidiary of Tan Chong Motor Holdings Berhad

Reg. No. 197201001333 (12969-P)

Edaran Tan Chong Motor Sdn Bhd reserves the right to make any changes without notice concerning colours, equipment or specifications detailed in this brochure, or to discontinue individual models. The colours of vehicles delivered may differ slightly from those in this brochure. The specifications vary for different countries depending on local market conditions. Please consult your local dealer to ensure that the vehicle delivered accords with your expectations.



\*Terms apply.



NissanMalaysia



nissanmalaysia



@NissanMalaysia

Nissan Customer Care Centre: **1800 88 3838**

[www.nissan.com.my](http://www.nissan.com.my)